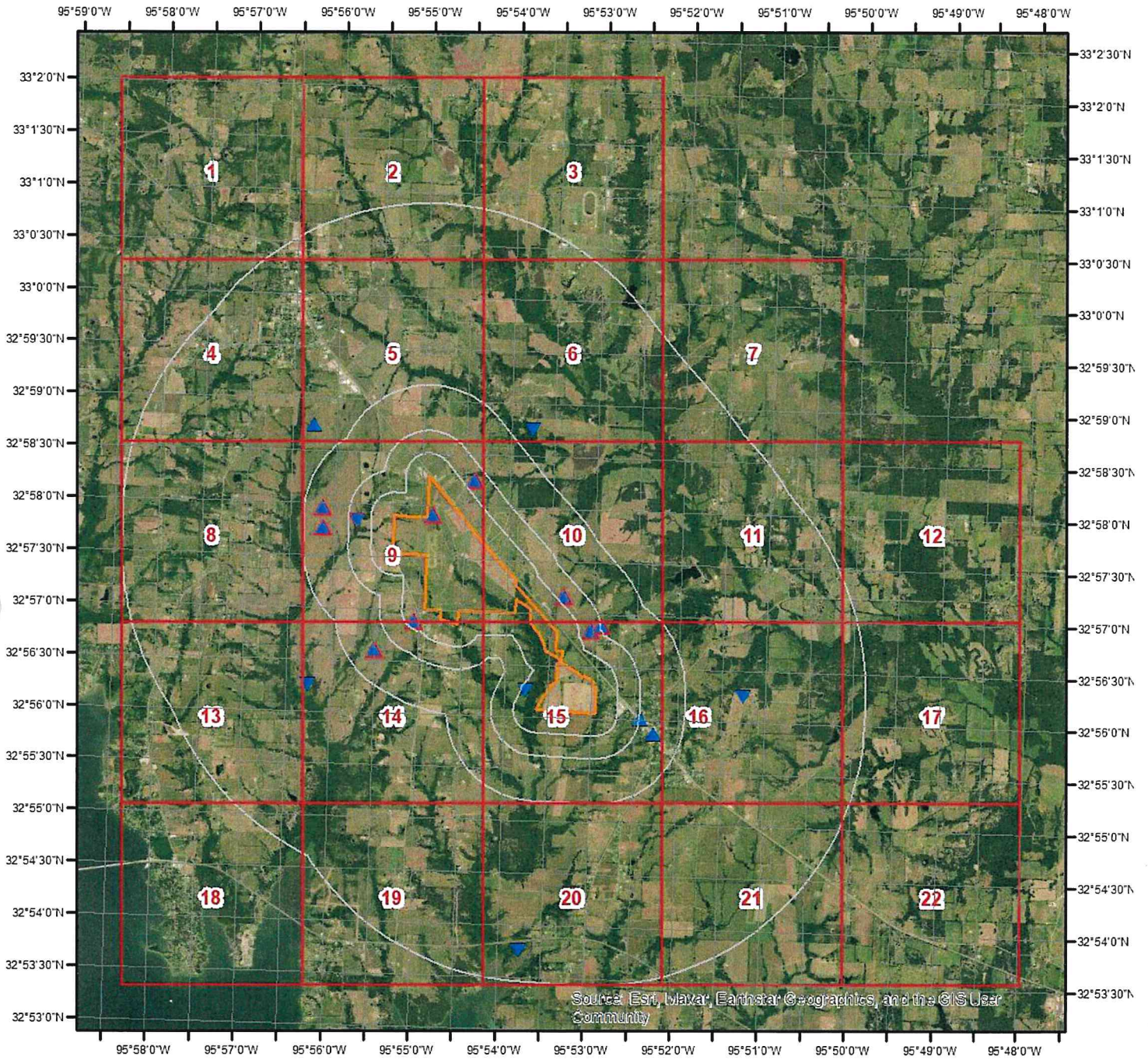
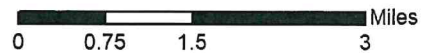


Wells and Additional Sources



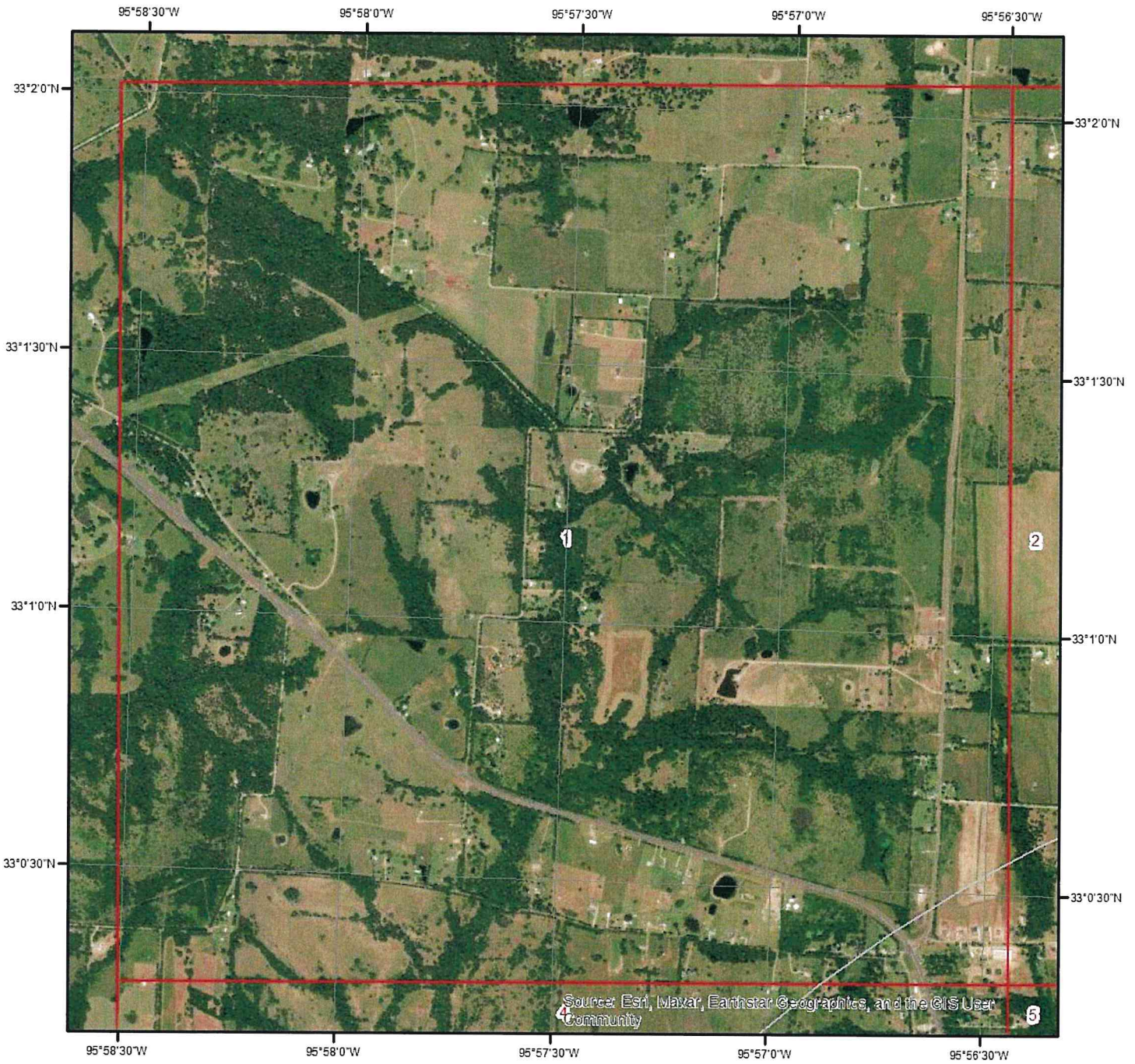
Wells & Additional Sources



- | | |
|--------------------------------|------------------------------------|
| ▲ Sites with Higher Elevation | ▲ OGW Sites with Higher Elevation |
| ■ Sites with Same Elevation | ■ OGW Sites with Same Elevation |
| ▼ Sites with Lower Elevation | ▼ OGW Sites with Lower Elevation |
| ○ Sites with Unknown Elevation | ● OGW Sites with Unknown Elevation |



Wells and Additional Sources



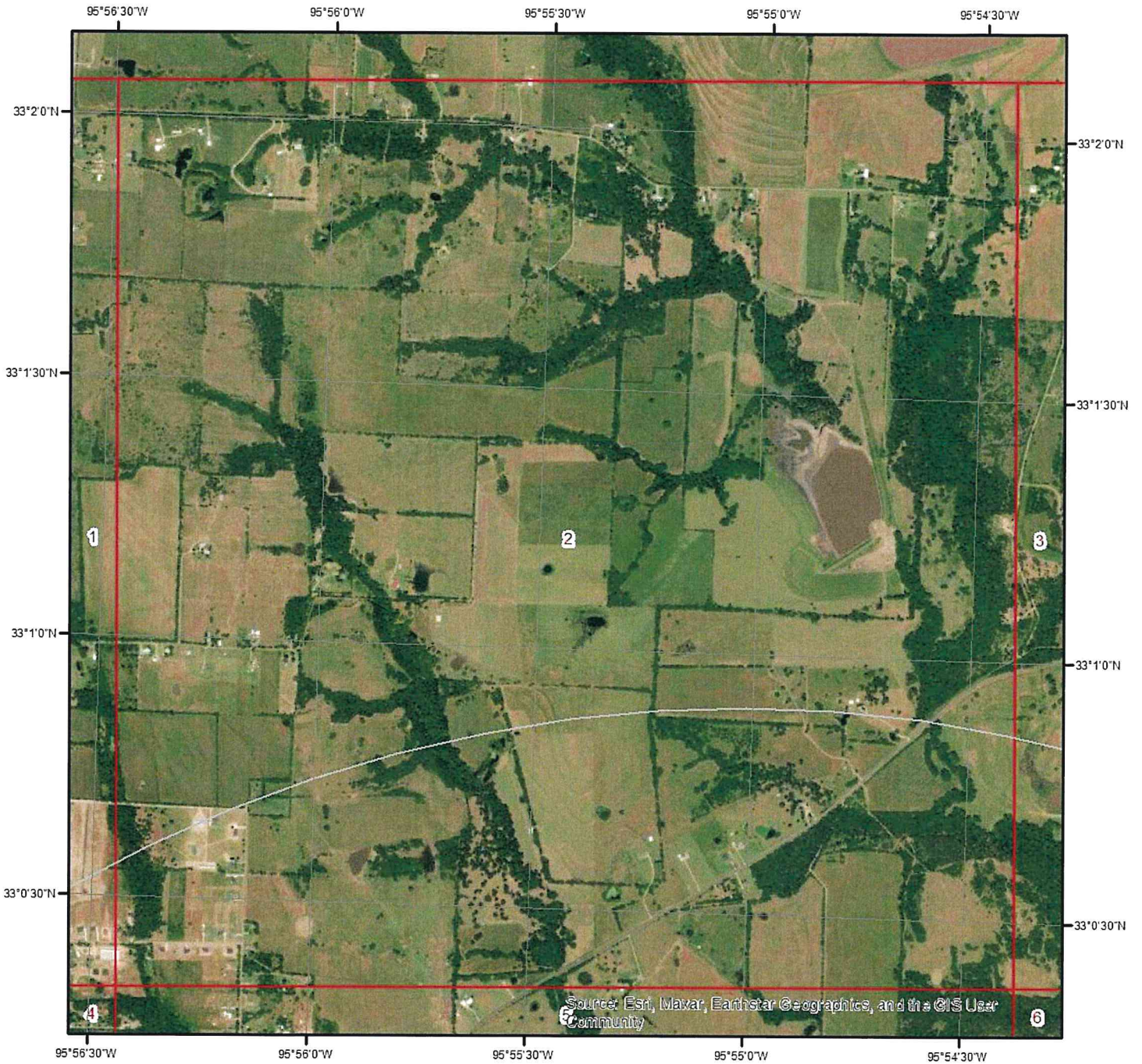
Wells & Additional Sources - Page 1



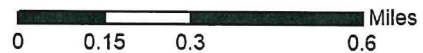
- | | |
|--------------------------------|------------------------------------|
| ▲ Sites with Higher Elevation | ▲ OGW Sites with Higher Elevation |
| ■ Sites with Same Elevation | ■ OGW Sites with Same Elevation |
| ▼ Sites with Lower Elevation | ▼ OGW Sites with Lower Elevation |
| ○ Sites with Unknown Elevation | ● OGW Sites with Unknown Elevation |



Wells and Additional Sources



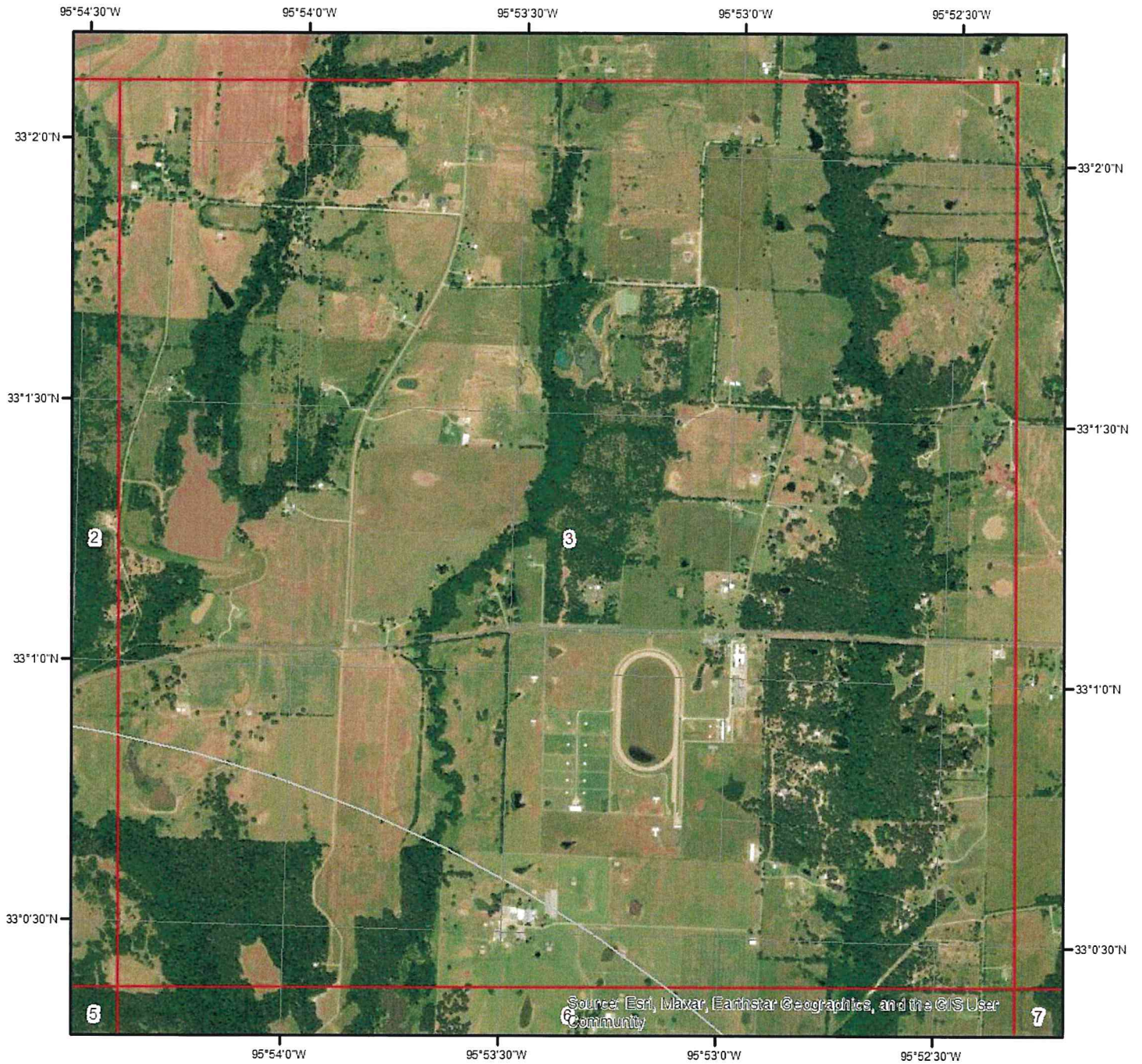
Wells & Additional Sources - Page 2



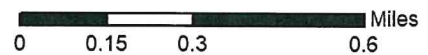
- | | |
|--------------------------------|------------------------------------|
| ▲ Sites with Higher Elevation | ▲ OGW Sites with Higher Elevation |
| ■ Sites with Same Elevation | ■ OGW Sites with Same Elevation |
| ▼ Sites with Lower Elevation | ▼ OGW Sites with Lower Elevation |
| ○ Sites with Unknown Elevation | ● OGW Sites with Unknown Elevation |



Wells and Additional Sources



Wells & Additional Sources - Page 3



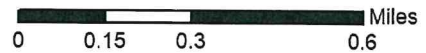
- | | |
|--------------------------------|------------------------------------|
| ▲ Sites with Higher Elevation | ▲ OGW Sites with Higher Elevation |
| ■ Sites with Same Elevation | ■ OGW Sites with Same Elevation |
| ▼ Sites with Lower Elevation | ▼ OGW Sites with Lower Elevation |
| ○ Sites with Unknown Elevation | ● OGW Sites with Unknown Elevation |



Wells and Additional Sources



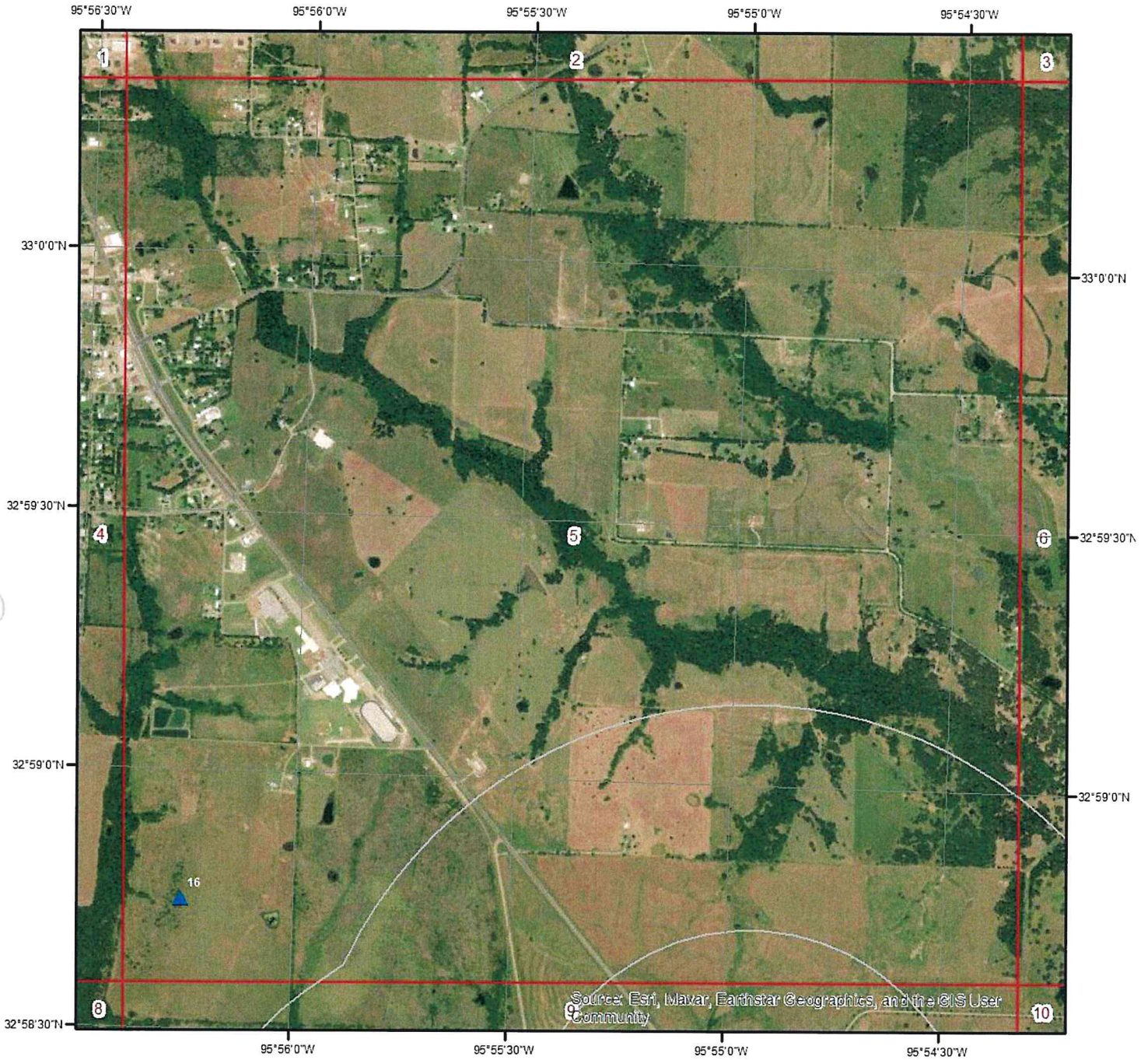
Wells & Additional Sources - Page 4



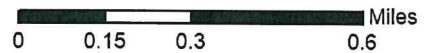
- | | |
|--------------------------------|------------------------------------|
| ▲ Sites with Higher Elevation | ▲ OGW Sites with Higher Elevation |
| ■ Sites with Same Elevation | ■ OGW Sites with Same Elevation |
| ▼ Sites with Lower Elevation | ▼ OGW Sites with Lower Elevation |
| ○ Sites with Unknown Elevation | ● OGW Sites with Unknown Elevation |



Wells and Additional Sources



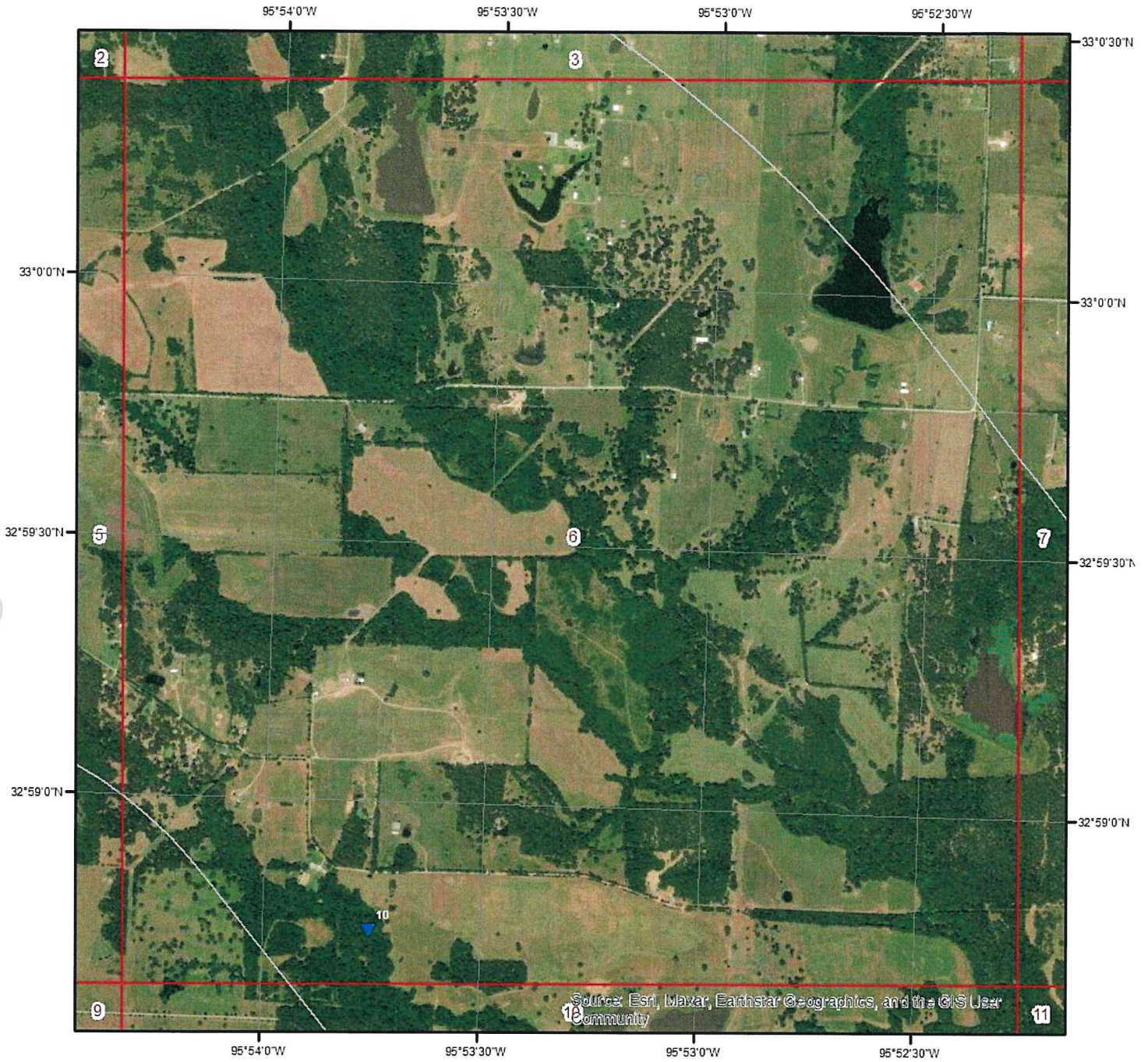
Wells & Additional Sources - Page 5



- | | |
|--------------------------------|------------------------------------|
| ▲ Sites with Higher Elevation | ▲ OGW Sites with Higher Elevation |
| ■ Sites with Same Elevation | ■ OGW Sites with Same Elevation |
| ▼ Sites with Lower Elevation | ▼ OGW Sites with Lower Elevation |
| ○ Sites with Unknown Elevation | ● OGW Sites with Unknown Elevation |



Wells and Additional Sources



Wells & Additional Sources - Page 6



- | | |
|--------------------------------|------------------------------------|
| ▲ Sites with Higher Elevation | ▲ OGW Sites with Higher Elevation |
| ■ Sites with Same Elevation | ■ OGW Sites with Same Elevation |
| ▼ Sites with Lower Elevation | ▼ OGW Sites with Lower Elevation |
| ○ Sites with Unknown Elevation | ● OGW Sites with Unknown Elevation |



Wells and Additional Sources



Wells & Additional Sources - Page 7



- | | |
|--------------------------------|------------------------------------|
| ▲ Sites with Higher Elevation | ▲ OGW Sites with Higher Elevation |
| ■ Sites with Same Elevation | ■ OGW Sites with Same Elevation |
| ▼ Sites with Lower Elevation | ▼ OGW Sites with Lower Elevation |
| ○ Sites with Unknown Elevation | ● OGW Sites with Unknown Elevation |



Wells and Additional Sources



Wells & Additional Sources - Page 8



- | | |
|--------------------------------|------------------------------------|
| ▲ Sites with Higher Elevation | ▲ OGW Sites with Higher Elevation |
| ■ Sites with Same Elevation | ■ OGW Sites with Same Elevation |
| ▼ Sites with Lower Elevation | ▼ OGW Sites with Lower Elevation |
| ○ Sites with Unknown Elevation | ● OGW Sites with Unknown Elevation |



Wells and Additional Sources



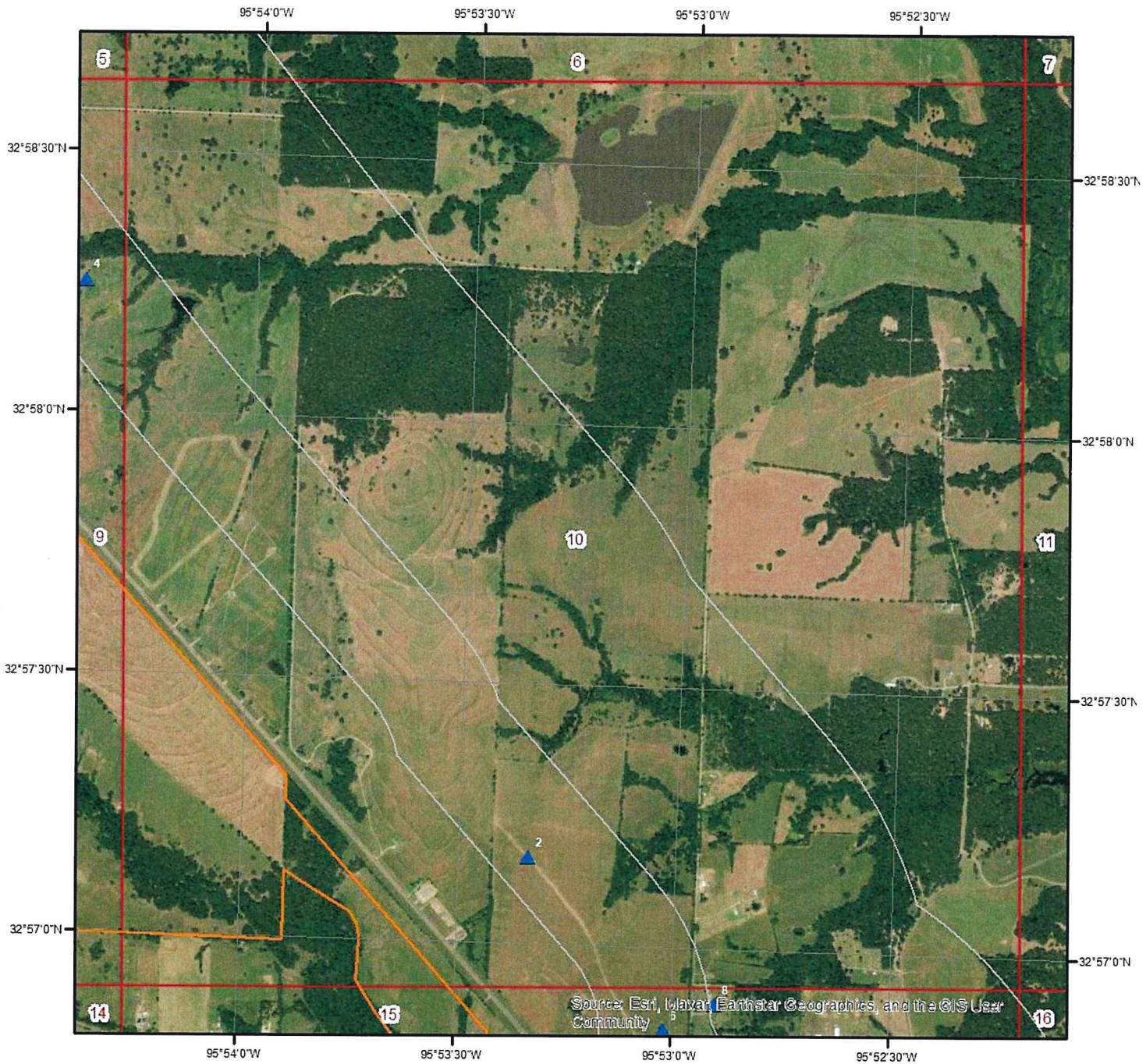
Wells & Additional Sources - Page 9



- | | |
|--------------------------------|------------------------------------|
| ▲ Sites with Higher Elevation | ▲ OGW Sites with Higher Elevation |
| ■ Sites with Same Elevation | ■ OGW Sites with Same Elevation |
| ▼ Sites with Lower Elevation | ▼ OGW Sites with Lower Elevation |
| ○ Sites with Unknown Elevation | ● OGW Sites with Unknown Elevation |



Wells and Additional Sources



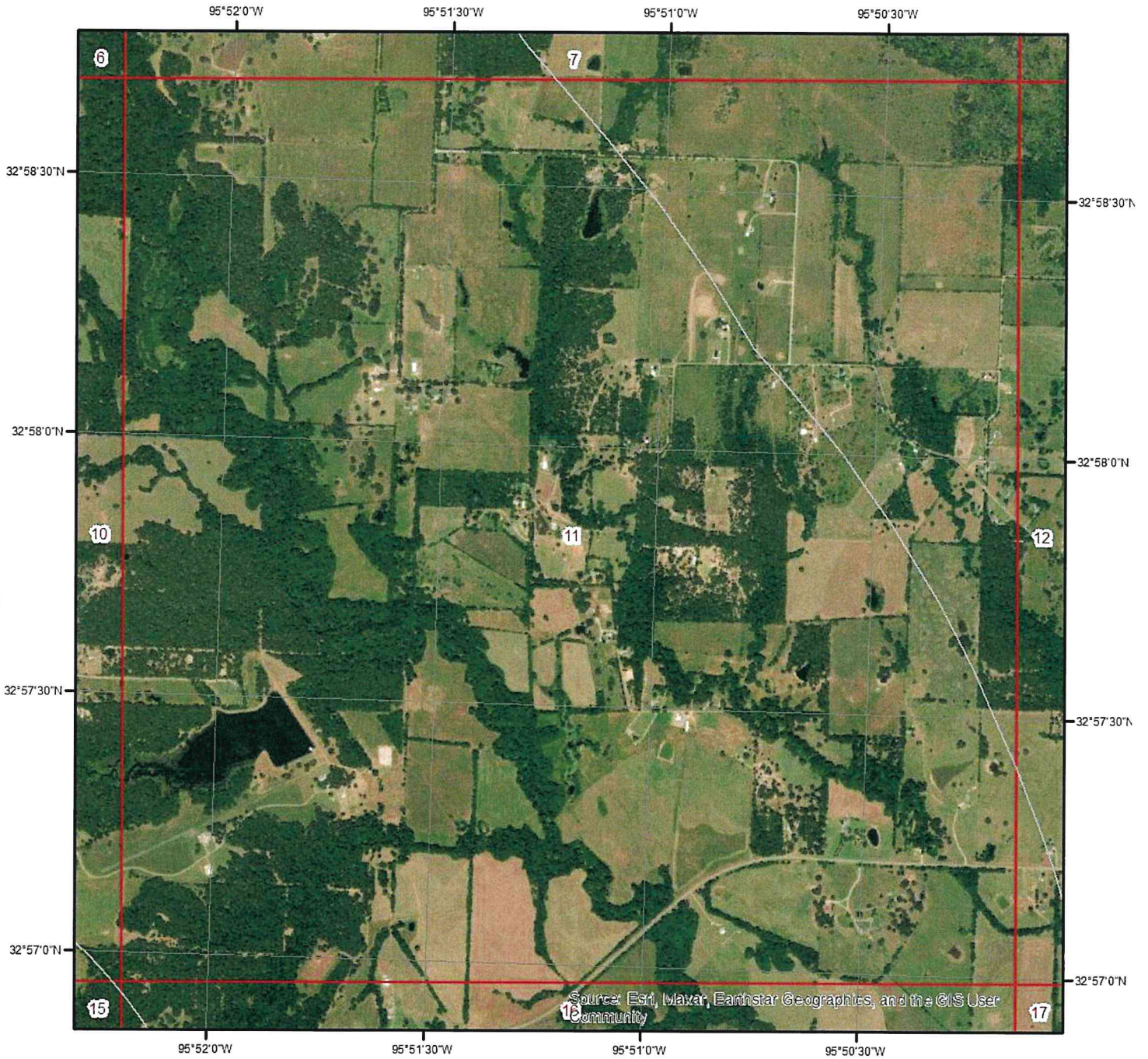
Wells & Additional Sources - Page 10



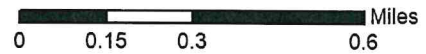
- | | |
|--------------------------------|------------------------------------|
| ▲ Sites with Higher Elevation | ▲ OGW Sites with Higher Elevation |
| ■ Sites with Same Elevation | ■ OGW Sites with Same Elevation |
| ▼ Sites with Lower Elevation | ▼ OGW Sites with Lower Elevation |
| ○ Sites with Unknown Elevation | ● OGW Sites with Unknown Elevation |



Wells and Additional Sources



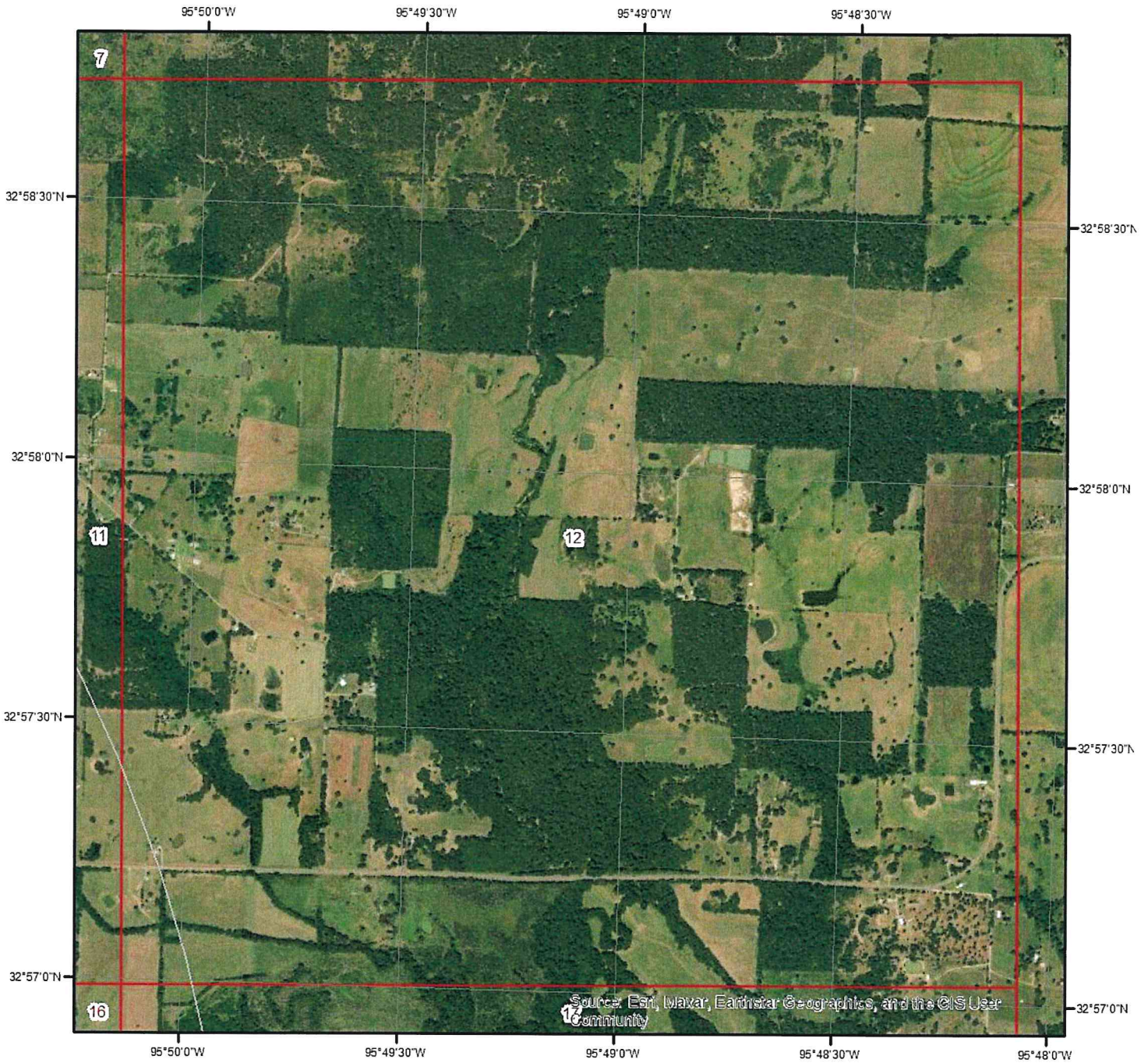
Wells & Additional Sources - Page 11



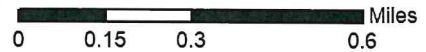
- | | |
|--------------------------------|------------------------------------|
| ▲ Sites with Higher Elevation | ▲ OGW Sites with Higher Elevation |
| ■ Sites with Same Elevation | ■ OGW Sites with Same Elevation |
| ▼ Sites with Lower Elevation | ▼ OGW Sites with Lower Elevation |
| ○ Sites with Unknown Elevation | ● OGW Sites with Unknown Elevation |



Wells and Additional Sources



Wells & Additional Sources - Page 12



- | | |
|--------------------------------|------------------------------------|
| ▲ Sites with Higher Elevation | ▲ OGW Sites with Higher Elevation |
| ■ Sites with Same Elevation | ■ OGW Sites with Same Elevation |
| ▼ Sites with Lower Elevation | ▼ OGW Sites with Lower Elevation |
| ○ Sites with Unknown Elevation | ● OGW Sites with Unknown Elevation |



Wells and Additional Sources



Wells & Additional Sources - Page 13



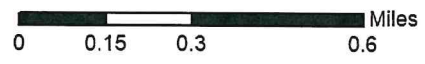
- | | |
|--------------------------------|------------------------------------|
| ▲ Sites with Higher Elevation | ▲ OGW Sites with Higher Elevation |
| ■ Sites with Same Elevation | ■ OGW Sites with Same Elevation |
| ▼ Sites with Lower Elevation | ▼ OGW Sites with Lower Elevation |
| ○ Sites with Unknown Elevation | ● OGW Sites with Unknown Elevation |



Wells and Additional Sources



Wells & Additional Sources - Page 14



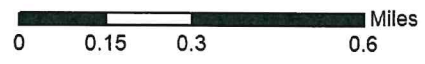
- | | |
|--------------------------------|------------------------------------|
| ▲ Sites with Higher Elevation | ▲ OGW Sites with Higher Elevation |
| ■ Sites with Same Elevation | ■ OGW Sites with Same Elevation |
| ▼ Sites with Lower Elevation | ▼ OGW Sites with Lower Elevation |
| ○ Sites with Unknown Elevation | ● OGW Sites with Unknown Elevation |



Wells and Additional Sources



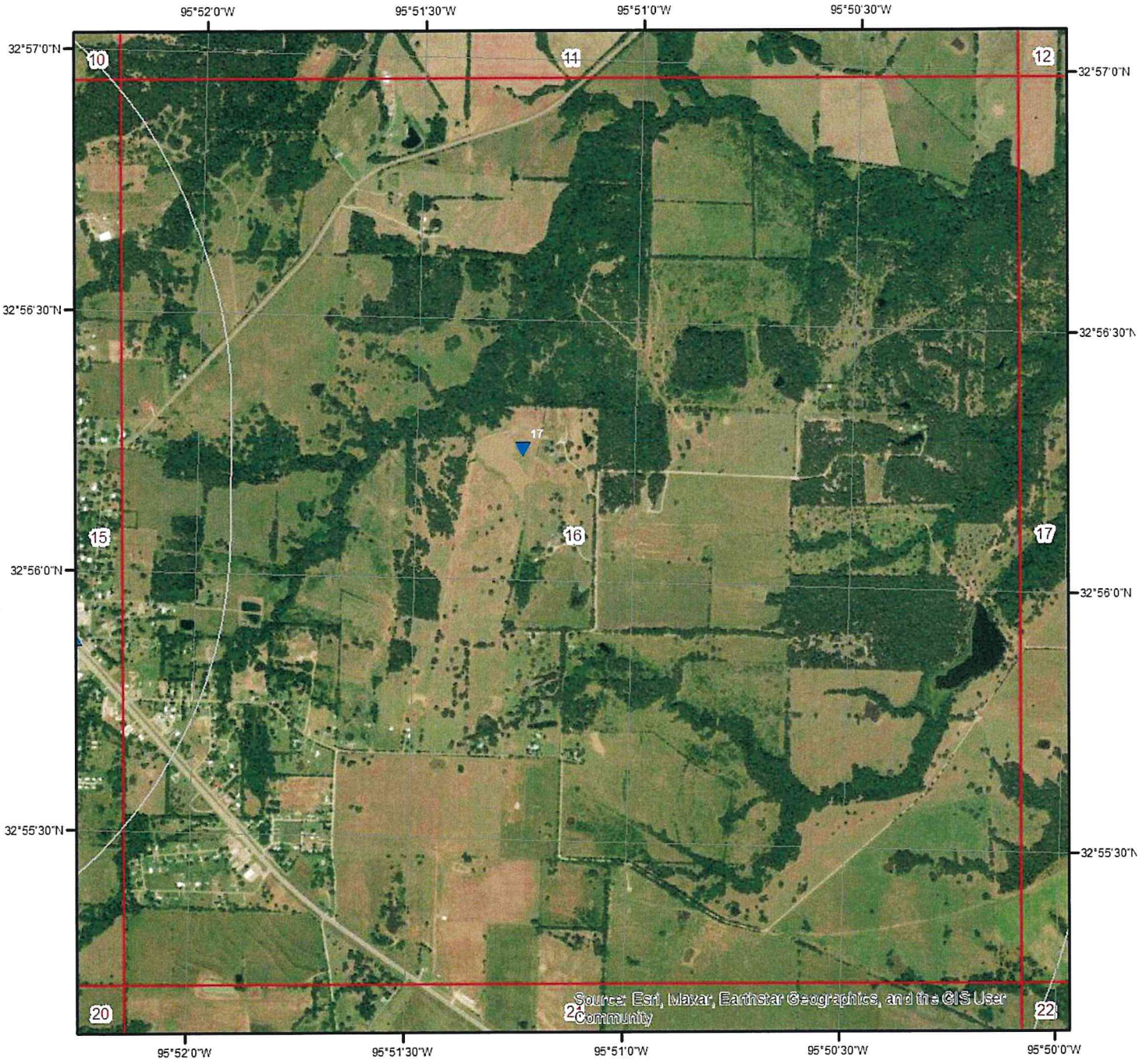
Wells & Additional Sources - Page 15



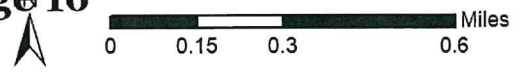
- | | |
|--------------------------------|------------------------------------|
| ▲ Sites with Higher Elevation | ▲ OGW Sites with Higher Elevation |
| ■ Sites with Same Elevation | ■ OGW Sites with Same Elevation |
| ▼ Sites with Lower Elevation | ▼ OGW Sites with Lower Elevation |
| ○ Sites with Unknown Elevation | ● OGW Sites with Unknown Elevation |



Wells and Additional Sources



Wells & Additional Sources - Page 16



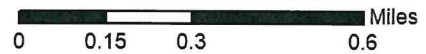
- | | |
|--------------------------------|------------------------------------|
| ▲ Sites with Higher Elevation | ▲ OGW Sites with Higher Elevation |
| ■ Sites with Same Elevation | ■ OGW Sites with Same Elevation |
| ▼ Sites with Lower Elevation | ▼ OGW Sites with Lower Elevation |
| ○ Sites with Unknown Elevation | ● OGW Sites with Unknown Elevation |



Wells and Additional Sources



Wells & Additional Sources - Page 17



- | | |
|--------------------------------|------------------------------------|
| ▲ Sites with Higher Elevation | ▲ OGW Sites with Higher Elevation |
| ■ Sites with Same Elevation | ■ OGW Sites with Same Elevation |
| ▼ Sites with Lower Elevation | ▼ OGW Sites with Lower Elevation |
| ○ Sites with Unknown Elevation | ● OGW Sites with Unknown Elevation |



Wells and Additional Sources



Wells & Additional Sources - Page 18



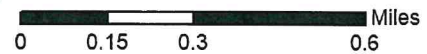
- | | |
|--------------------------------|------------------------------------|
| ▲ Sites with Higher Elevation | ▲ OGW Sites with Higher Elevation |
| ■ Sites with Same Elevation | ■ OGW Sites with Same Elevation |
| ▼ Sites with Lower Elevation | ▼ OGW Sites with Lower Elevation |
| ○ Sites with Unknown Elevation | ● OGW Sites with Unknown Elevation |



Wells and Additional Sources



Wells & Additional Sources - Page 19



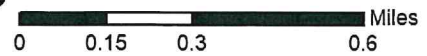
- | | |
|--------------------------------|------------------------------------|
| ▲ Sites with Higher Elevation | ▲ OGW Sites with Higher Elevation |
| ■ Sites with Same Elevation | ■ OGW Sites with Same Elevation |
| ▼ Sites with Lower Elevation | ▼ OGW Sites with Lower Elevation |
| ○ Sites with Unknown Elevation | ● OGW Sites with Unknown Elevation |



Wells and Additional Sources



Wells & Additional Sources - Page 20



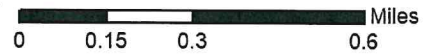
- | | |
|--------------------------------|------------------------------------|
| ▲ Sites with Higher Elevation | ▲ OGW Sites with Higher Elevation |
| ■ Sites with Same Elevation | ■ OGW Sites with Same Elevation |
| ▼ Sites with Lower Elevation | ▼ OGW Sites with Lower Elevation |
| ○ Sites with Unknown Elevation | ● OGW Sites with Unknown Elevation |



Wells and Additional Sources



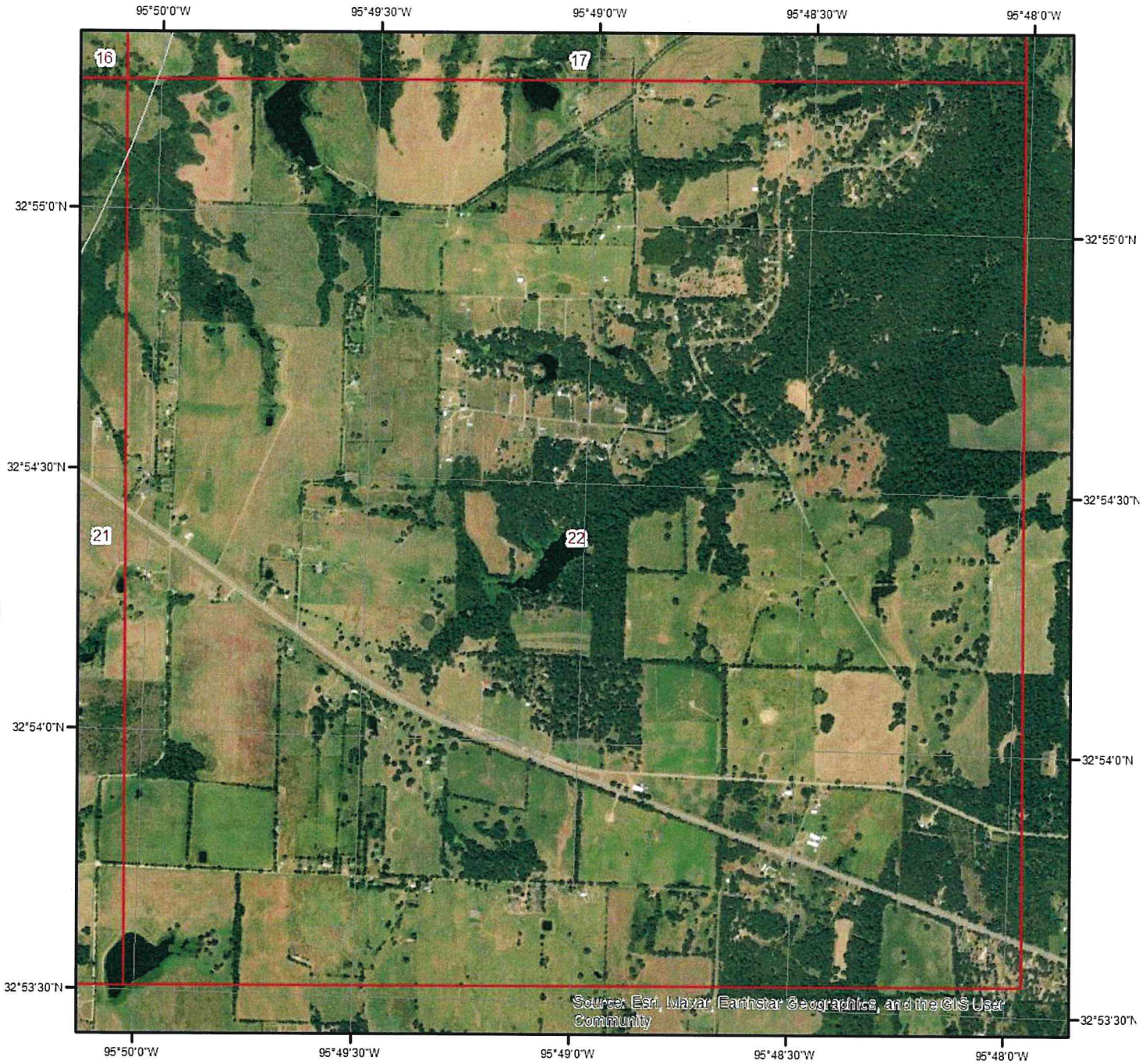
Wells & Additional Sources - Page 21



- | | |
|--------------------------------|------------------------------------|
| ▲ Sites with Higher Elevation | ▲ OGW Sites with Higher Elevation |
| ■ Sites with Same Elevation | ■ OGW Sites with Same Elevation |
| ▼ Sites with Lower Elevation | ▼ OGW Sites with Lower Elevation |
| ○ Sites with Unknown Elevation | ● OGW Sites with Unknown Elevation |

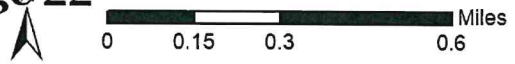


Wells and Additional Sources



Source: Esri, Maxar, Earthstar Geographics, and the GIS User Community

Wells & Additional Sources - Page 22



- | | |
|--------------------------------|------------------------------------|
| ▲ Sites with Higher Elevation | ▲ OGW Sites with Higher Elevation |
| ■ Sites with Same Elevation | ■ OGW Sites with Same Elevation |
| ▼ Sites with Lower Elevation | ▼ OGW Sites with Lower Elevation |
| ○ Sites with Unknown Elevation | ● OGW Sites with Unknown Elevation |



Wells and Additional Sources Summary

Federal Sources

Public Water Systems Violations and Enforcement Data

Map Key	PWS ID	Distance (ft)	Direction
14	TX1900004	2679.43	SE

Safe Drinking Water Information System (SDWIS)

Map Key	ID	Distance (ft)	Direction
	No records found		

Wells from NWIS

Map Key	ID	Distance (ft)	Direction
	No records found		

State Sources

Fort Bend Subsidence District Water Wells

Map Key	ID	Distance (ft)	Direction
	No records found		

Groundwater Database

Map Key	ID	Distance (ft)	Direction
	No records found		

Harris Galveston Subsidence District Water Wells

Map Key	ID	Distance (ft)	Direction
	No records found		

High Plains Water Wells

Map Key	ID	Distance (ft)	Direction
	No records found		

Oil and Gas Wells

Map Key	API	Distance (ft)	Direction
1	37980007	906.51	WSW
2	379	1702.85	E
3	379	0.00	-

Wells and Additional Sources Summary

4	379	1950.72	N
6	379	2070.82	ESE
7	37930135	3751.30	WSW
8	379	2695.62	ESE
9	379	2154.35	WNW
11	379	4144.93	WNW
12	379	4170.43	WNW

Plotted Water Wells

Map Key	WWD ID	Distance (ft)	Direction
5		1025.83	SSE
10		6400.71	NNE
13		8141.43	WSW
16		7045.83	NW
17		8697.63	ESE
18	997965	14085.52	S

Plugged Water Wells

Map Key	Well Rpt Track No	Distance (ft)	Direction
15	85807	3666.65	SE

Public Water Systems Wells and Surface Intakes

Map Key	ID	Distance (ft)	Direction
No records found			

Select Wells from SDR

Map Key	ID	Distance (ft)	Direction
No records found			

Submitted Drillers Report Database

Map Key	Well Rpt Track No	Distance (ft)	Direction
15	85807	3666.65	SE

Underground Injection Control

Map Key	ID	Distance (ft)	Direction
No records found			

Water Utility Database

Map Key	ID	Distance (ft)	Direction
No records found			

Well Log Reports from Plotted Water Wells

Map Key	ID	Distance (ft)	Direction
---------	----	---------------	-----------

Wells and Additional Sources Summary

No records found

Wells and Additional Sources Detail Report

Uniq ID:	352838	GIS Lat27:	32.9526373
GIS API5:		GIS Long27:	-95.8886409
GIS Well No:	1	GIS Lat83:	32.95275656
Sym No:	3	GIS Long83:	-95.88888447
GIS Symbol Desc:	Dry Hole	X:	-95.8888844620916
Reliab:	15	Y:	32.95275656784499
GIS Location Source:	Commission`s hardcopy map		

Map Key	Direction	Distance (mi)	Distance (ft)	Elevation (ft)	DB
3	-	0.00	0.00	544.23	OGW

API:	379	Object ID:	
Uniq ID:	352835	GIS Lat27:	32.9650668
GIS API5:		GIS Long27:	-95.9142453
GIS Well No:	1	GIS Lat83:	32.96518572
Sym No:	3	GIS Long83:	-95.91448962
GIS Symbol Desc:	Dry Hole	X:	-95.91448961533418
Reliab:	15	Y:	32.965185712814325
GIS Location Source:	Commission`s hardcopy map		

Map Key	Direction	Distance (mi)	Distance (ft)	Elevation (ft)	DB
4	N	0.37	1,950.72	543.23	OGW

API:	379	Object ID:	
Uniq ID:	352833	GIS Lat27:	32.9706997
GIS API5:		GIS Long27:	-95.90620799999999
GIS Well No:	2	GIS Lat83:	32.97081838
Sym No:	3	GIS Long83:	-95.90645209
GIS Symbol Desc:	Dry Hole	X:	-95.9064520006449
Reliab:	15	Y:	32.97081838348385
GIS Location Source:	Commission`s hardcopy map		

Map Key	Direction	Distance (mi)	Distance (ft)	Elevation (ft)	DB
6	ESE	0.39	2,070.82	519.22	OGW

API:	379	Object ID:	
Uniq ID:	352840	GIS Lat27:	32.9472398
GIS API5:		GIS Long27:	-95.8832795
GIS Well No:	1	GIS Lat83:	32.94735923
Sym No:	3	GIS Long83:	-95.88352292
GIS Symbol Desc:	Dry Hole	X:	-95.88352286206572
Reliab:	15	Y:	32.947359284258404
GIS Location Source:	Commission`s hardcopy map		

Map Key	Direction	Distance (mi)	Distance (ft)	Elevation (ft)	DB
---------	-----------	---------------	---------------	----------------	----

Wells and Additional Sources Detail Report

7	WSW	0.71	3,751.30	513.45	OGW
API:		37930135	Object ID:		
Uniq ID:		352842	GIS Lat27:	32.9432948	
GIS API5:		30135	GIS Long27:	-95.924662	
GIS Well No:		1	GIS Lat83:	32.94341456	
Sym No:		3	GIS Long83:	-95.92490659	
GIS Symbol Desc:		Dry Hole	X:	-95.92490653410455	
Reliab:		15	Y:	32.94341456968837	
GIS Location Source:		Commission`s hardcopy map			

Map Key	Direction	Distance (mi)	Distance (ft)	Elevation (ft)	DB
8	ESE	0.51	2,695.62	519.43	OGW
API:		379	Object ID:		
Uniq ID:		352839	GIS Lat27:	32.9481032	
GIS API5:			GIS Long27:	-95.8813337	
GIS Well No:		1	GIS Lat83:	32.94822259	
Sym No:		3	GIS Long83:	-95.88157706	
GIS Symbol Desc:		Dry Hole	X:	-95.88157702827696	
Reliab:		15	Y:	32.948222573743244	
GIS Location Source:		Commission`s hardcopy map			

Map Key	Direction	Distance (mi)	Distance (ft)	Elevation (ft)	DB
9	WNW	0.41	2,154.35	498.38	OGW
API:		379	Object ID:		
Uniq ID:		352836	GIS Lat27:	32.9639061	
GIS API5:			GIS Long27:	-95.9285971	
GIS Well No:		1A	GIS Lat83:	32.96402513	
Sym No:		3	GIS Long83:	-95.92884183	
GIS Symbol Desc:		Dry Hole	X:	-95.92884175746089	
Reliab:		15	Y:	32.964025211071174	
GIS Location Source:		Commission`s hardcopy map			

Map Key	Direction	Distance (mi)	Distance (ft)	Elevation (ft)	DB
11	WNW	0.79	4,144.93	509.74	OGW
API:		379	Object ID:		
Uniq ID:		352837	GIS Lat27:	32.9627076	
GIS API5:			GIS Long27:	-95.9350844	
GIS Well No:		2	GIS Lat83:	32.96282671	
Sym No:		3	GIS Long83:	-95.93532932	
GIS Symbol Desc:		Dry Hole	X:	-95.93532927978455	

Wells and Additional Sources Detail Report

Reliab: 15 Y: 32.96282670749067
 GIS Location Source: Commission's hardcopy map

Map Key	Direction	Distance (mi)	Distance (ft)	Elevation (ft)	DB
12	WNW	0.79	4,170.43	520.95	OGW

API:	379	Object ID:	
Uniq ID:	352834	GIS Lat27:	32.9658546
GIS API5:		GIS Long27:	-95.9351189
GIS Well No:	1	GIS Lat83:	32.9659736
Sym No:	3	GIS Long83:	-95.93536383
GIS Symbol Desc:	Dry Hole	X:	-95.93536375961008
Reliab:	15	Y:	32.96597367149039
GIS Location Source:	Commission's hardcopy map		

Plotted Water Wells

Map Key	Direction	Distance (mi)	Distance (ft)	Elevation (ft)	DB
5	SSE	0.19	1,025.83	492.75	WATER WELLS

WWD ID:		Deg:	34
Grid No:	34-01-6	Sev Min:	01
TX Grid ID:	32859.0	Two Min:	6
TX Grid:	32737.0	Shape Length:	0.0
Perimeter:	17005.832	Shape Area:	0.00173591433204
County:			
Data Source :	Water Well Report Viewer, 2.5 Minute Quad Grid (Map)		

Map Key	Direction	Distance (mi)	Distance (ft)	Elevation (ft)	DB
10	NNE	1.21	6,400.71	479.86	WATER WELLS

WWD ID:		Deg:	34
Grid No:	34-01-3	Sev Min:	01
TX Grid ID:	32523.0	Two Min:	3
TX Grid:	32401.0	Shape Length:	0.0
Perimeter:	17003.453	Shape Area:	0.00173606905254
County:			
Data Source :	Water Well Report Viewer, 2.5 Minute Quad Grid (Map)		

Map Key	Direction	Distance (mi)	Distance (ft)	Elevation (ft)	DB
13	WSW	1.54	8,141.43	467.57	WATER WELLS

WWD ID:		Deg:	34
Grid No:	34-01-5	Sev Min:	01
TX Grid ID:	32858.0	Two Min:	5

Wells and Additional Sources Detail Report

TX Grid: 32745.0 Shape Length: 0.0
 Perimeter: 17007.221 Shape Area: 0.00173622422956
 County:
 Data Source : Water Well Report Viewer, 2.5 Minute Quad Grid (Map)

Map Key	Direction	Distance (mi)	Distance (ft)	Elevation (ft)	DB
16	NW	1.33	7,045.83	537.28	WATER WELLS

WWD ID: Deg: 34
 Grid No: 34-01-2 Sev Min: 01
 TX Grid ID: 32522.0 Two Min: 2
 TX Grid: 32409.0 Shape Length: 0.0
 Perimeter: 17004.842 Shape Area: 0.00173637929138
 County:
 Data Source : Water Well Report Viewer, 2.5 Minute Quad Grid (Map)

Map Key	Direction	Distance (mi)	Distance (ft)	Elevation (ft)	DB
17	ESE	1.65	8,697.63	484.93	WATER WELLS

WWD ID: Deg: 34
 Grid No: 34-02-4 Sev Min: 02
 TX Grid ID: 32860.0 Two Min: 4
 TX Grid: 32729.0 Shape Length: 0.0
 Perimeter: 17005.686 Shape Area: 0.00173588583362
 County:
 Data Source : Water Well Report Viewer, 2.5 Minute Quad Grid (Map)

Map Key	Direction	Distance (mi)	Distance (ft)	Elevation (ft)	DB
18	S	2.67	14,085.52	450.23	WATER WELLS

WWD ID: 997965 Deg: 34
 Grid No: 34-01-9 Sev Min: 01
 TX Grid ID: 33195.0 Two Min: 9
 TX Grid: 33073.0 Shape Length: 0.0
 Perimeter: 17009.957 Shape Area: 0.00173608776097
 County: RAINS
 Data Source : Water Well Report Viewer, 2.5 Minute Quad Grid (Map); TCEQ Water Well Public AGO

Plugged Water Wells

Map Key	Direction	Distance (mi)	Distance (ft)	Elevation (ft)	DB
15	SE	0.69	3,666.65	525.40	PLUGGED WELLS

License No: 54661 Well Address 1: 100 North Mian Street
 Variance No: Well Address 2:

Wells and Additional Sources Detail Report

Plug Rpt Track No:	114292	Well City:	Point
Well Rpt Track No:	85807	Well Zip:	
Date Submitted:	2006-06-23	Owner Well No:	SB-1
No Wells Plugged:		Owner Name:	George Wright
Plugger Name:	Jackie Raines	Owner Address 1:	304 Freeman
Plugging Mtd Descr:		Owner Address 2:	
Plugging Date:	2006-06-02	Owner City:	Garland
Orig License No:	54661	Owner State:	TX
Orig Driller Name:	Jackie Raines	Owner Zip:	75041
Original Well Use:	Environmental Soil Boring	Owner Oth Cntry:	
Orig Wel Use Descr:		Owner Country:	
Orig Drill Date:	2006-06-02	County:	Rains
Apprentice Reg No:		Latitude:	32.931111
Apprentice Signed:		Lat Degree:	32
Driller Signed:	Jackie Raines	Lat Minute:	55
Driller Address 1:	9416 Prestonwood Drive	Lat Second:	52
Driller Address 2:		Longitude:	-95.871111
Driller City:	Shreveport	Long Degree:	95
Driller State:	LA	Long Minute:	52
Driller Zip:	71115	Long Second:	16
Driller Oth Cntry:		Hor Datum Type:	
Driller Country:		Grid No:	34-02-4
Elevation:		Loc Verfd by Drllr:	No
Company Name:	Precision Probe and Drilling		
Original Company Name:	Precision Probe and Drilling		
Plugging Method:	Unknown		
Comments:			
Well Location Description:			

Submitted Drillers Report Database

Map Key	Direction	Distance (mi)	Distance (ft)	Elevation (ft)	DB
15	SE	0.69	3,666.65	525.40	SDR WELLS

License No:	54661	Well Address1:	100 North Mian Street
PWS No:		Well Addr2:	
Plug Rpt Track No:	114292	Well City:	Point
Well Rpt Track No:	85807	Well Zip:	
Orig Well Rpt Trk No:		Owner Well No:	SB-1
Apprentice Reg No:		Owner Name:	George Wright
No of Wells Drill:		Owner Addr1:	304 Freeman
Date Submitted:	2006-06-23	Owner Addr2:	
Type of Work:	New Well	Owner City:	Garland
Typ of Wrk Oth Descr:		Owner State:	TX
Seal Method:	Not Applicable	Owner Zip:	75041
Seal Mthd Oth Desc:		Owner Country:	
Plugged w/i 48Hrs:	Yes	Driller Name:	Jackie Raines

Wells and Additional Sources Detail Report

Drilling Start Dt:	2006-06-02	Driller Address1:	9416 Prestonwood Drive
Drilling End Dt:	2006-06-02	Driller Addr2:	
Proposed Use:	Environmental Soil Boring	Driller City:	Shreveport
Prop Use Oth Descr:		Driller State:	LA
TCEQ Approve Plans:		Driller Zip:	71115
Approve by Variance:		Driller Oth Cntry:	
Loc Vfy by Driller:	No	Driller Country:	
Sealed by Driller:	No	Dist to Sep Contam:	
Sealed by Name:		Dist to Septic Tk:	
Driller Signed:	Jackie Raines	Dist to Prop Line:	
Apprentice Signed:		Dist Verifi Method:	
Surface Compl:	Unknown	Horizon Datum Type:	
Surf Comp Oth Desc:		Elevation:	
Compl by Driller:		Latitude:	32.931111
Pump Type:		Lat Degree:	32
Pump Type Oth Desc:		Lat Minute:	55
Pump Depth:		Lat Second:	52
Chemical Analysis:	No	Longitude:	-95.871111
Injurious Water:	No	Long Degree:	95
County:	Rains	Long Minute:	52
Known Loc Error:	No	Long Second:	16
Grid No:	34-02-4		
Company Name:	Precision Probe and Drilling		
Well Location Description:			
Comments:			
Data Source:	Full SDR Database; SDRDB Well Location (Map)		
Drillers Well Report:	https://www3.twdb.texas.gov/apps/waterdatainteractive/GetReports.aspx?Num=85807&Type=SDR-Well		